



151 Buckingham Road

Edgware, HA8 6NN

Offers Over £295,000

Moreland International are proud to present this well presented 2 bedroom flat on the second floor located near Edgware and Canons Park Station. The property comprises of two bedrooms, a study/office room (can be used as a 3rd bedroom), living room, fitted kitchen and bathroom. Further benefits include a communal garden and off-street parking spaces (not allocated).

Ideal for first-time buyers or buy to let investors. Additional information: Lease details - 93 years remaining (prospective buyers responsibility to confirm the lease), Ground Rent: £10 per annum, Service Charge: £40 PCM.

Call us now to arrange a viewing for this lovely flat. Do not miss out on this opportunity!

Viewing

Please contact our Edgware Office on 02082385840 if you wish to arrange a viewing appointment for this property or require further information.



2



1

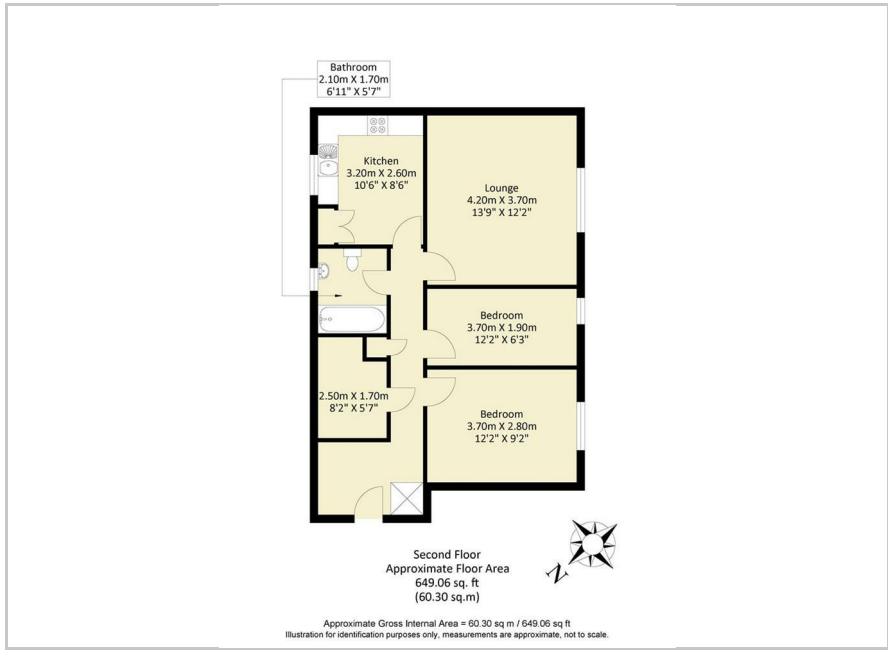


1



D

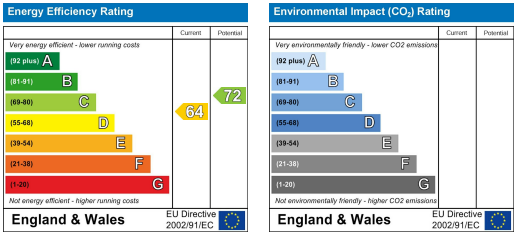
Floor Plan



Area Map



Energy Efficiency Graph



These particulars, whilst believed to be accurate are set out as a general outline only for guidance and do not constitute any part of an offer or contract. Intending purchasers should not rely on them as statements of representation of fact, but must satisfy themselves by inspection or otherwise as to their accuracy. No person in this firm's employment has the authority to make or give any representation or warranty in respect of the property.

17 Station Parade, Whitchurch Lane, Canons Park, Edgware, Middlesex HA8 6RW
T: +44 (0)208 238 5840 F: +44 (0)208 381 3825 E: info@morelanduk.com
International Associated Offices: Canada, India, Sri Lanka, Switzerland

Sales
Lettings
Property Management
Property Development
Financial Services
Valuation